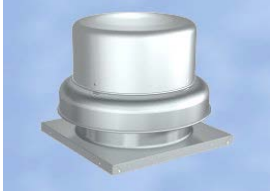




Greenheck / Cook Common Equipment Cross-Reference Guide

Rooftop Ventilation

Centrifugal, Down Blast



Greenheck G / GB
Cook ACE-D / ACE-B

Centrifugal, Down Blast



Greenheck LD / LB
Cook HLC-D / HLC-B

Centrifugal, Penthouse



Greenheck LDP / LBP
Cook TLC-D / TLC-B

Centrifugal, Supply



Greenheck RSF / LSF
Cook ASP / ASP-T

Propeller Exhaust/ Supply



Greenheck RBE / RBS
Cook HSE / HSS

Centrifugal, Up Blast



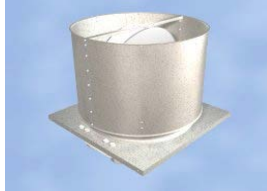
Greenheck CUE / CUBE
Cook ACRU-D / ACRU-B

Centrifugal, Up Blast



Greenheck TCBRU
Cook TCNU

Propeller, Up Blast



Greenheck RDU / RBU
Cook AUD / AVB

Propeller, Up Blast



Greenheck TAUD/TAUB
Cook TUD / TUB

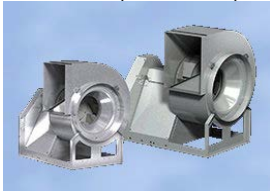
Mixed Flow, Up Blast



Greenheck QEI
Cook QMXU / UCV

Utility Sets

Centrif. (B.I./ Airfoil)



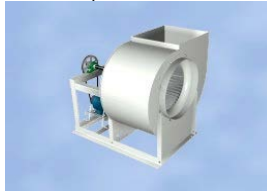
Greenheck USF
Cook CP

Centrif. (High Pressure)



Greenheck CSW
Cook CA / CF

Centrif. (Forward Curved)



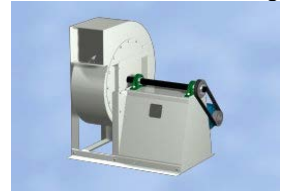
Greenheck SFD / SFB
Cook CPFD / CPFB

Fiberglass Reinforced Plastic



Greenheck BCSW-FRP
Cook FCP

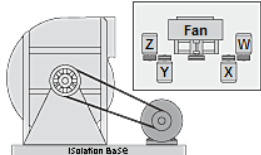
Radial/ Material Handling



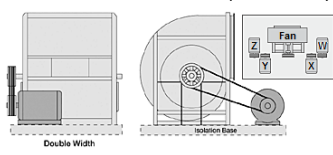
Greenheck IPA
Cook MHA

Industry-Standard Arrangements

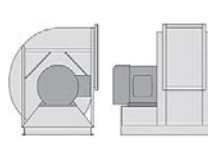
Arr. 1W, 1X, 1Y, 1Z



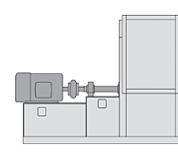
Arr. 3W, 3X, 3Y, 3Z (SW/ DW)



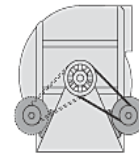
Arr. 4



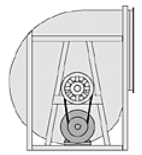
Arr. 8



Arr. 9



Arr. 10



Inline

Centrifugal, Square



Greenheck SQ / BSQ
Cook SQN-D / SQN-B

Ceiling / Cabinet



Greenheck SP / CSP
Cook GC, Gemini / GN,
Gemini Inline

Mixed Flow, Octagonal



Greenheck EQB
Cook (n/a)

Centrifugal, Tubular



Greenheck TCB
Cook SQI-B

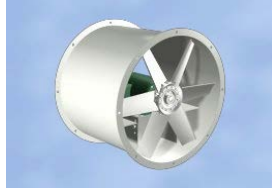
Mixed Flow, Tubular



Greenheck QEID / QEI
Cook QMX

Tube, Vane Axial, Sidewall

Vane Axial, Clean Air



Greenheck TDI / TBI
Cook TID / TIB, ADD / ADB

High Static/ High Temp



Greenheck AX
Cook AFD, ADD, EDD

Adjustable Blade Pitch



Greenheck VAD / VAB
Cook VAD / VAB

Sidewall, Centrif. Exhaust



Greenheck CW / CWB
Cook ACW-D / ACW-B

Propeller Exhaust/ Supply



Greenheck SBE / SBS
Cook EWB / SWB

Lab Exhaust (includes Cook, Strobic, & MK-Plastics)

Centrif. B.I., High Plume



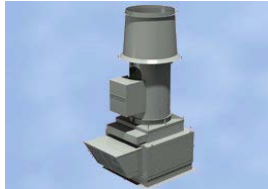
Greenheck Vektor-H
Cook TCNHB-LE
Strobic BS
MK Plastics KVC

Mixed Flow, High Plume



Greenheck Vektor-MH
Cook QMX
Strobic BS
MK Plastics KVC

Mixed Flow, Dilution



Greenheck Vektor-MD
Cook QMX-VP
Strobic TS
MK Plastics Axijet-V

Utility Set, High Plume



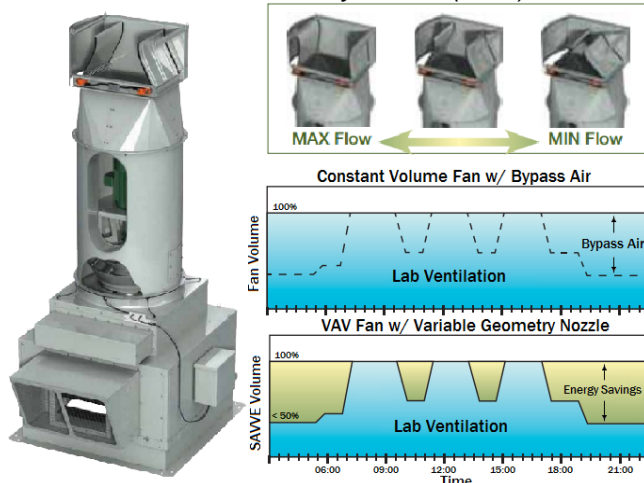
Greenheck Vektor-CH
Cook CA / CF / CP
Strobic (n/a)
MK Plastics (n/a)

Utility Set, Dilution



Greenheck Vektor-CD
Cook (CA / CF / CP)-VP
Strobic (n/a)
MK Plastics Axijet S

Variable Geometry Nozzle (VGN)



Greenheck Vektor-HS, MS, CS
Cook, Strobic, & MK-Plastics (n/a)

Greenheck's Vektor-HS, MS and CS utilize variable geometry nozzles (VGN) to safely reduce the energy costs of the exhaust fans on a variable volume lab exhaust system. Vektor VGN systems safely apply a variable frequency drive (VFD) to control the fan speed. A signal from the VFD, as well as a signal from Greenheck's Sure-Aire Variable Volume Exhaust (SAVVE) non-invasive airflow monitoring system, is sent to the integral controls which position the aerodynamic nozzle blades to attain the desired nozzle velocity. The system is capable of reducing fan energy costs by 50% or more based on the variability of exhaust requirement within the lab system. Greenheck is the first and only company to offer this innovative technology.